



PERI YACHTS
CONTEMPORARY BENCHMARK



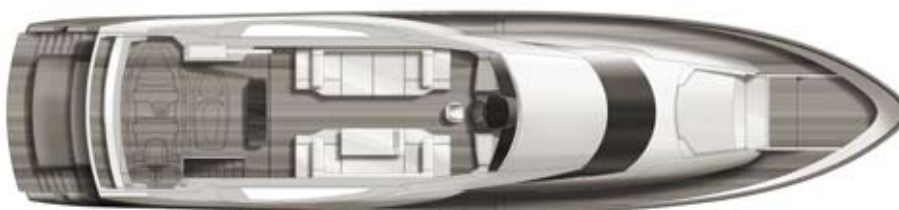
PERI YACHTS
CONTEMPORARY BENCHMARK

PERI 29 TECHNICAL SPECIFICATIONS

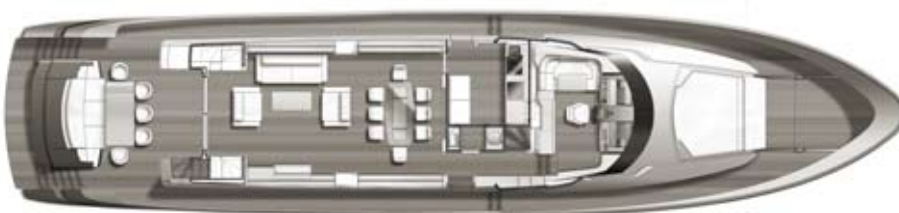
0 GENERAL ARRANGEMENT PLAN



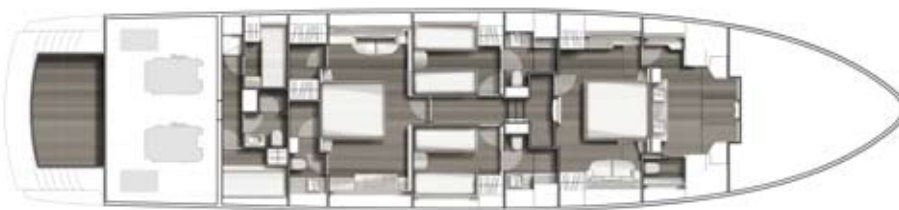
PROFILE



FLYBRIDGE



MAIN DECK



LOWER DECK



PERI 29 TECHNICAL SPECIFICATIONS

1 PRINCIPAL CHARACTERISTICS

Loa	28.61 m
Lwl	21.73 m
Max.Beam	6.44 m
Total Draft	1.72 m
Displacement (1/3 Laden)	62 MT
Hull Type	V Planing
Fuel Tank Capacity	6750 L
Fresh Water Tank Capacity	2500 L
Waste Water Tank Capacity	1600 L
Engines	2 x "CAT®" C32 ACERT 1825 HP
Generators	2 x "CAT®" / "ONAN®" 22 Kw/27.5 Kw, 380 V 50 Hz
Gearbox with trolling valve	"ZF®" 3050 V
Max. Speed	28 knots
Cruising Speed	23 knots
Range	Up to 400 Nm
Number of Guest	8 (+2) in 4 cabins
Number of Crew	3 + 1 in 2 cabins
Exterior and Interior Design	Scaro Design
Engineering	Dixon Yacht Design
Scantling and Structural FEA	High Modulus
Classification	RINA / MCA Compliant

The characteristics as speed and range are considered at 1/3 load (1/3 tanks), Extensive sea trials will be conducted on deep open water at bofor 3 force max, no more than 3 crew members and 2 surveyors on board.

2 BUILDING CHARACTERISTICS

- o Built using hand laid technique with PVC foam, unidirectional and multiaxial E-glass with Epoxy resin
- o Longitudinal stringers stiffened, transverse bulkheads and frames supported hull
- o All final painted hull and superstructure
- o PVC based, honeycomb cored veneered plywood partition bulkheads
- o Fire insulation on all engine room bulkheads according to classification and MCA rules

3 EXTERIORS

FLYBRIDGE

- o Navigation station
- o Teak laid flybridge deck and stairs
- o Stainless steel handrails
- o Single helm seat
- o Forward facing seating on both sides for four
- o Teak dining table for eight with sofa for five and sun lounger poufs for three
- o Sunbeds on portside with storage below
- o Scatter cushions for eight
- o Side lockers
- o Switches & sockets
- o Wetbar with sink, hot and cold water tap, icemaker and fridge
- o GRP radar arch with overhead lighting
- o Remote searchlight
- o Horn
- o Flag pole
- o Navigation lights
- o Open scanner radar to mast
- o 4 audio marine speakers with CD/radio
- o "OPACMARE®" or equivalent 800 kg hydraulic crane
- o Deck drainage scuppers
- o High rated courtesy lights
- o Life jackets
- o Two liferafts for six each
- o Fire extinguisher
- o 4.3 m. "ARIMAR®" tender + 50 HP "YAMAHA®" engine or equivalent
- o Boat Hooks



PERI 29 TECHNICAL SPECIFICATIONS

MAIN DECK

- o Teak laid deck and platform and stairs
- o Two hot and cold platform showers
- o Stainless steel swimming ladder
- o Stainless steel 316L handrails with carbon top
- o Teak dining table for eight
- o Free standing chairs for five
- o Sofa for three
- o Two stern capstan winches supported by Central Hydraulic System
- o High rated overhead & courtesy lights
- o Hand held fire extinguisher
- o Two audio marine speakers
- o Flag pole
- o Stainless steel sliding laminated glass door to saloon
- o Two stainless steel 316L Bollards
- o Weathertight aluminum door to port side galley access
- o Weathertight aluminum door to starboard saloon access
- o Weathertight aluminum door to port side engine room access
- o Two hinged boarding gates from aft to swimming platform
- o Shore line cable and TV connection socket at the aft
- o Switches & sockets
- o Remote control "OPACMARE®" telescopic 435 cm. gangway
- o Stainless steel plate port of registry and boat name
- o Emergency fuel shut off valves control and engine room fire extinguishing activation system

FORE DECK

- o Two plough type stainless steel anchor
- o Teak laid deck
- o Upholstered sun bed with storage below
- o Sofa for four
- o High rated courtesy lights
- o Two 96m. galvanized chain
- o Four PVC Large Size Losange fenders
- o Six PVC Small Size Losange fenders
- o Hydraulic vertical anchor windlass with anchor stopper and chain washer
- o Four stainless steel 316L bollards
- o Two stainless steel 316L amid-ship bollards with fairleads
- o Two audio marine speakers
- o Fender storage
- o Pantograph windscreen wipers with spray wash
- o Self draining fore deck
- o Deck and chain wash
- o Stainless steel bow roller with anchor stop
- o Stainless steel hull protection plate under bow
- o Mooring lines

4 INTERIORS

MAIN DECK

Salon

- o Upholstered and leather wall panels
- o Fitted carpet
- o Upholstered ceiling
- o Upholstered side windows with powered blinds
- o Wood veneer and leather side furniture
- o Low coffee table
- o Large leather sofa for three
- o Leather armchairs for two
- o Leather pouffes for two
- o Scatter cushions for five
- o Glass top dining table
- o Dining chairs for eight
- o 42" HD TV with lifting system
- o AV system
- o Overhead lighting
- o Switches & sockets
- o Telephone & data point sockets
- o Air conditioning and heating fan coils
- o Fresh air blowers
- o Drinks cabinet with glass holders
- o Courtesy lights

Dayhead

- o Lacquered wall panels
- o Non slip wood flooring
- o Lacquered ceiling
- o Lacquered vanity unit with storage
- o Mirror
- o Washbasin
- o Tap
- o Toilet
- o Set of bathroom accessories
- o Overhead & vanity unit lighting
- o Switch & socket
- o Extractor unit

Galley

- o Wood veneer and lacquered wall panels
- o Access to portside deck
- o Non slip wood flooring
- o Lacquered ceiling
- o Wood veneer door to saloon
- o Double overhead lockers and under counter cabinets with plate and cup restrains
- o "CORIAN®" or equivalent work top with stainless steel sink
- o Tap
- o Rubbish bin
- o Two full height stainless steel fridges with freezers
- o Built-in extractor hood
- o Built-in electric ceramic hob with four cooking zones
- o Built-in oven



PERI 29 TECHNICAL SPECIFICATIONS

- o Built-in microwave
- o Built-in dishwasher
- o Free standing small coffee machine
- o Overhead & counter lighting
- o Switches & sockets
- o Extractor unit
- o Air conditioning and heating fan coil
- o Fresh air blower
- o Fire extinguisher

Pilothouse

- o Wood veneer and lacquered wall panels
- o Wood flooring
- o Upholstered and lacquered ceiling
- o Navigation station
- o Single helm seat
- o Leather sofa for three
- o Veneer top table
- o Chart table area with stowage
- o Lacquered wall cabinets
- o Switches & sockets
- o Telephone & data point sockets
- o Overhead, courtesy & cruise lighting
- o Air conditioning and heating fan coil
- o Fresh air blower
- o First aid kit

Upper Corridor

- o From salon to cockpit, to dayhead and to guest accommodation
- o Access to starboard deck
- o Wood veneer and lacquered wall panels
- o Non slip wood flooring
- o Upholstered ceiling
- o Wood stairs to pilothouse
- o Wood stairs to lower corridor
- o Stainless steel handrail
- o Side storage cabinets
- o Overhead & courtesy lighting
- o Switches & sockets

LOWER DECK

Master Stateroom

- o Upholstered and wood veneer wall panels
- o Fitted carpet
- o Upholstered and leather ceiling
- o Upholstered side windows with powered blinds
- o Double bed with storage below
- o Self sprung foam mattress, pillows, covers, bedspread, duvet and duvet cover
- o Leather headboard
- o Lacquered vanity unit with leather top and vanity mirror
- o Wood veneer wardrobe with hanging rail and lower storage
- o Bedside tables and headboard niche

- o Safe locker
- o Leather sofa
- o Leather pouffe
- o 32" HD ready TV & AV system
- o Overhead lighting
- o Reading lights
- o Wardrobe lighting
- o Switches, sockets, telephone & data point sockets
- o Air conditioning and heating fan coils
- o Fresh air blowers
- o Doors to corridor & en-suite

Master En-Suite

- o Wood veneer and lacquered wall panels
- o Non slip wood flooring
- o Lacquered ceiling
- o Lacquered vanity unit with storage below
- o Full height storage beside vanity unit
- o Set of towels
- o Mirror
- o Washbasins for two
- o Taps
- o Toilet
- o Set of bathroom accessories
- o Shower area with plexyglass separator
- o Teak shower floor with grilles
- o Side shelving and storage with stainless steel fiddles
- o Overhead & vanity unit lighting
- o Switches & sockets
- o Extractor unit

Vip Stateroom

- o Upholstered and wood veneer wall panels
- o Fitted carpet
- o Upholstered and leather ceiling
- o Upholstered side windows with powered blinds
- o Double bed with storage below
- o Self sprung foam mattress, pillows, covers, bedspread, duvet and duvet cover
- o Leather headboard
- o Lacquered vanity unit with leather top and vanity mirror
- o Leather sofa
- o Leather pouffe
- o Bedside tables
- o 32" HD ready TV & AV system
- o Overhead lighting
- o Reading lights
- o Switches, sockets, telephone & data point sockets
- o Air conditioning and heating fan coil
- o Fresh air blowers
- o Doors to en-suite, walk-in wardrobe & corridor

Vip En-Suite

- o Lacquered wall panels



PERI 29 TECHNICAL SPECIFICATIONS

- o Non slip wood flooring
- o Lacquered ceiling
- o Lacquered vanity unit with storage below and above
- o Mirror
- o Washbasin
- o Tap
- o Toilet
- o Rubbish bin
- o Set of bathroom accessories
- o Shower cubicle with glass door
- o Teak shower floor with grilles
- o Switches & sockets
- o Overhead & vanity unit lighting
- o Extractor unit

Vip Walk-In Wardrobe

- o Full height open wardrobes with hanging rails and low level drawers
- o Non slip wood flooring
- o Upholstered ceiling panels
- o Shelving with stainless steel fiddles
- o Full height mirror
- o Overhead & wardrobe lighting
- o Switch & socket

Starboard Guest Stateroom

- o Upholstered and wood veneer wall panels
- o Fitted carpet
- o Upholstered ceiling
- o Upholstered side windows with powered blinds
- o Twin beds with storage below
- o Self sprung foam mattresses, pillows, covers, bedspreads, duvets and duvet covers
- o Leather headboard
- o Night table
- o Wood veneer wardrobe with hanging rail and low level drawer
- o 19" / 20" LCD TV & AV system
- o Overhead lighting
- o Reading lights
- o Switches, sockets, telephone & data point sockets
- o Air conditioning and heating fan coil
- o Fresh air blowers
- o Wood veneer doors to en-suite & corridor

Starboard Guest En-Suite

- o Lacquered wall panels
- o Non slip wood flooring
- o Lacquered ceiling
- o Lacquered vanity unit with storage below and above
- o Mirror
- o Washbasin
- o Tap
- o Toilet
- o Set of bathroom accessories

- o Shower cubicle with glass door
- o Wood shower floor with grilles
- o Wood shower seat with shelving
- o Switches & sockets
- o Overhead & vanity unit lighting
- o Extractor unit

Portside Guest Stateroom

- o Upholstered and wood veneer wall panels
- o Fitted carpet
- o Upholstered ceiling
- o Upholstered side windows with powered blinds
- o Twin beds with storage below
- o Self sprung foam mattresses, pillows, covers, bedspreads, duvets and duvet covers
- o Leather headboard
- o Night table
- o Wood veneer wardrobe with hanging rail and low level drawer
- o 19" / 20" LCD TV & AV system
- o Overhead lighting
- o Reading lights
- o Switches, sockets, telephone & data point sockets
- o Air conditioning and heating fan coil
- o Fresh air blowers
- o Wood veneer doors to en-suite & corridor

Portside Guest En-Suite

- o Lacquered wall panels
- o Non slip wood flooring
- o Lacquered ceiling
- o Lacquered vanity unit with storage below and above
- o Mirror
- o Washbasin
- o Tap
- o Toilet
- o Set of bathroom accessories
- o Shower cubicle with glass door
- o Wood shower floor with grilles
- o Wood shower seat with shelving
- o Switches & sockets
- o Overhead & vanity unit lighting
- o Extractor unit

Lower Corridor

- o From guest accommodation to upper corridor
- o Wood veneer and upholstered wall panels
- o Fitted carpet
- o Upholstered ceiling
- o Wood stairs to master stateroom lobby
- o Wood stairs to upper corridor
- o Stainless steel handrail
- o Overhead & courtesy lighting
- o Switches & sockets



PERI 29 TECHNICAL SPECIFICATIONS

Captains Cabin

- o Lacquered wall panels
- o Carpet flooring
- o Lacquered ceiling
- o Lacquered side window
- o Berth with foam mattress, pillow, cover, bedspread, duvet and duvet cover
- o Storage under berth
- o Lacquered wardrobe with hanging rail
- o Overhead lighting
- o Reading light
- o Switches, sockets, data point
- o Air conditioning and heating fan coil
- o Fresh air blowers
- o Door to crew corridor

Starboard Crew Cabin

- o Lacquered wall panels
- o Carpet flooring
- o Lacquered ceiling
- o Lacquered side window
- o Twin bunk berth with foam mattresses, pillows, covers, bedspreads, duvets and duvet covers
- o Storage under lower berth
- o Lacquered wardrobe with hanging rail and lighting
- o Overhead lighting
- o Reading lights
- o Switches, sockets & data point
- o Air conditioning and heating fan coil
- o Fresh air blowers
- o Lacquered door to crew corridor

Crew Bathroom

- o Lacquered wall panels
- o Non slip wood flooring
- o Lacquered ceiling
- o Corian counter top with stainless steel washbasin
- o Lacquered storage under counter with shelving
- o Mirror
- o Tap
- o Toilet
- o Set of bathroom accessories
- o Shower cubicle with glass door
- o Switches & sockets
- o Overhead & mirror lighting
- o Extractor unit

Crew Corridor

- o Lacquered wall panels
- o Carpet flooring
- o Lacquered ceiling
- o Stairs to portside deck
- o Washer - dryer
- o Overhead & courtesy lighting
- o Switches & sockets

Lazarette

- o Hydraulic garage door
- o Teak flooring
- o Racks

5 NAVIGATION AND ELECTRONICS SYSTEM

PILOTHOUSE HELM STATION

- o 2 x 19" "SIMRAD®" GB40 or equivalent TFT display
- o 1 x "SIMRAD®" GB40 Processor or equivalent
- o 1 x "SIMRAD®" GB40 or equivalent network sounder
- o 1 x "SIMRAD®" AP28 or equivalent autopilot
- o 1 x "SIMRAD®" RF300 or equivalent rudder feedback
- o 1 x "SIMRAD®" RC42 or equivalent fluxgate compass
- o 1 x "SIMRAD®" IS20 or equivalent wind system pack
- o 1 x "SIMRAD®" NAVICO RDR1064 or equivalent radar pack
- o 1 x "SIMRAD®" AC12 or equivalent control unit
- o 1 x "SIMRAD®" RS87 VHF Radio
- o 1 x "SIMRAD®" HT50 or equivalent hand held VHF radio
- o 1 x "SEATEL®" C.24 sat tv antenna
- o 1 x "C-MAP®" Max pro chart east and west med. sea
- o Engines revolution counter with engines hour counter
- o Engine water thermometer
- o Engine oil pressure gauge
- o Engines batteries voltmeters
- o Engine ignition keys
- o Engine emergency stop button
- o Windlass and anchor washing controls
- o Bow thruster control
- o Navigation, anchor and dashboard light switches
- o Horn control
- o Bilge and low tank alarm panel
- o Wiper and screen wash control
- o Hydraulic power steering and adjustable tilt steering wheel
- o Fuel level gauge
- o Fresh water level gauge
- o Searchlight control
- o Carling switch board
- o Leather covered dashboard
- o Hand-held fire extinguisher
- o Adjustable air vents
- o Remote anchor winch controls
- o Pilothouse-controlled color TV cameras in engine room and aft deck
- o Fire pump controls
- o Flaps panel control
- o Anchor washer control

FLYBRIDGE HELM STATION

- o 2 x 15" "SIMRAD®" DI15 or equivalent TFT display
- o 1 x "SIMRAD®" GB40 Processor or equivalent
- o 1 x "SIMRAD®" AP28 or equivalent autopilot
- o 1 x "SIMRAD®" RF300 or equivalent rudder feedback



PERI 29 TECHNICAL SPECIFICATIONS

- o 1 x "SIMRAD®" RC42 or equivalent fluxgate compass
- o 1 x "SIMRAD®" AC12 or equivalent control unit
- o Engines revolution counter with engines hour counter
- o Engine water thermometer
- o Engine oil pressure gauge
- o Engines batteries voltmeters
- o Engine ignition keys
- o Engine emergency stop button
- o Flaps up and down panel with indicator
- o Windlass and anchor washing controls
- o Bow thruster control
- o Navigation, anchor and dashboard light switches
- o Horn control
- o Bilge and low tank alarm panel
- o Hydraulic power steering and adjustable tilt steering wheel
- o Searchlight control
- o Carling switch board
- o Hand-held fire extinguisher
- o Remote anchor winch

6 PROPULSION AND STEERING SYSTEM

- o Ni-Al-Br propellers
- o Two bronze wedge type rudder blades
- o Hydraulic steering system
- o Emergency hydraulic steering system
- o 30 HP Hydraulic fixed tunnel with double prop. bow thruster
- o Control at each station

7 ELECTRICAL SYSTEM

- o 4 x 200 Ah 24 V gel batteries for engine and generator starting
- o 6 x 200 Ah 24 V gel batteries for service and emergency
- o 2 x 200 Ah 24 V gel batteries for emergency
- o 2 x 120 Ah 24 V batteries for radio
- o 2 x 100A 24V automatic battery charger
- o 2 x 30A 24V automatic battery charger
- o Shore power 380V, 50 Hz.
- o 20mt 380V Shore connection cable
- o Copper strip ground system
- o Emergency lighting overall
- o AC Group Main Switchboard in Engine Room
- o DC Group Main Switchboard in Engine Room
- o AC Group Pump Control Panel in Engine Room

8 PLUMBING SYSTEMS

FUEL OIL SYSTEM

- o One main structural tank and 2 daily structural tanks with a total capacity of 6750 L.
- o Tank level sensors on all

- o Tank level monitoring system
- o Automatic pull-wire fuel shut off system
- o Fuel transfer pump
- o Stainless steel 316L valves
- o Diesel Oil Separator for Generators
- o Diesel Oil Separator for Main Engines

FRESH WATER SYSTEM

- o One 2500 L. composite tank with manhole
- o Tank level sensor monitored
- o Two pumps providing the system pressure by an autoclave group assembling on stainless steel base with vibration damper
- o Hot Water circulation pump
- o Individually or simultaneously working pumps
- o Boiler
- o 260 L/hr capacity watermaker fitted in the engine room

BILGE SYSTEM

- o Central Bilge System Pump
- o CuNiFe type pipes

FIRE PROTECTION SYSTEM

- o An automatic and manual controlled one-shot fire extinguishing system at the engine room
- o Air intake with remote controlled emergency shut down
- o 4 x 6L and 6 x 2L portable fire extinguishers located in each cabin and saloon
- o CuNiFe type pipes
- o Central Fire Protection Pump
- o Fire detection and alarm system with heat and smoke detectors
- o Control panel in pilothouse
- o Ventilation damper shut off switches
- o Inert gas system with remote control from fire station

AIR CONDITIONING

- o 96000 BTU A/C chiller unit in the engine room
- o Chilled water delivered from compressors to fancoils by ppr pipes all around the boat
- o Fancoils installed in each cabin with control units

ENGINE ROOM VENTILATION

- o Fans for air ventilation

HYDRAULIC SYSTEM

- o 1 x 380 VAC tank mounted power pack
- o 2 x PTO pump connected to one of the gear box
- o Bowthruster, capstans, mooring winches,
- o Metallic piping

SEA WATER SYSTEM

- o 2 x 2^{1/2}" intake valve & raw water filter
- o Stainless steel 316L ball valves



PERI 29 TECHNICAL SPECIFICATIONS

- o Individual water supply shut off valve in each compartment
- o Stainless steel 316L valves

GREY & BLACK WATER SYSTEM

- o 700 L double bottom composite Sewage water tank
- o 900 L double bottom composite Grey water tank
- o Two macerator pumps for toilets
- o HDPE type grey & black water pipes

9 OPTION LIST

NAVIGATION & YACHT MANAGEMENT SYSTEM

- o Yacht Management System
- o Upgraded Alarm and Monitoring System
- o Upgraded Satellite TV & Communication
- o Gyrocompass
- o "NAVTEX®"

MACHINERY

- o Zero speed wing stabilizer "TRAC®" or equivalent
- o Upgraded hydraulic pack with "TRAC®" 30 HP stern thruster.
- o "FISCHER PANDA®" 6.7 Kw or equivalent aux. genset
- o Increased Range Fuel Tank (+2000 Litres)
- o Portable diving compressor
- o "ALFA LAVAL®" or equivalent will be installed to clean up the diesel oil in the daily tanks.
- o Oil Change System for Main Engines & Generators
- o "HAMANN®" or equivalent treatment system
- o Central vacuum system

TENDER & TOYS

- o "ZODIAC®" yacht line 470 + "YAMAHA®" 100HP or equivalent (upgrade)
- o Jet-ski "YAMAHA®" 2010 VX Sport or equivalent + tie points cradle

LIGHTING

- o Underwater lights 5 units
- o Dimmers for exterior lights
- o Dimmers for interior lights

EXTERIOR ACCESSORIES

- o Bimini Flybridge
- o Aft deck Dining Shade
- o Side Window Shade

ACCOMODATION

- o GA Modification Fifth Cabin
- o Additional Pullman Bed

KITCHENWARE

- o Set of Kitchenware

- o Set of Tableware
- o Barbecue on flybridge
- o Wine Cooler
- o Trash Compactor
- o Garbage Disposal

LINEN

- o Set of linen
- o Set of towels
- o Set of bathrobes
- o Set of sun bathing towels

SECURITY

- o Additional CC Camera
- o Burglar Alarm
- o Additional Digital Safe

ENTERTAINMENT

- o Centralized Audio System
- o Centralized Video System

COVERS

- o Exterior Seating Covers
- o Exterior Removable Towel Seating Covers
- o Flybridge IP Cover
- o Interior Bridge IP Cover
- o Interior Carpet Covers
- o Interior Seating Covers
- o Set of Fender Covers



PERI YACHTS
CONTEMPORARY BENCHMARK

PERI 29 TECHNICAL SPECIFICATIONS

DISCLAIMER

THE DEFINITIONS AND SPECIFICATIONS LISTED HEREIN ARE INTENDED TO DESCRIBE THE GENERAL METHOD OF USE AND OPERATION OF THE YACHT. IN ORDER TO DEEM THE ACTUAL RESULTS OF THE VARYING METHODS OF OPERATION OF THE YACHT TO BE EQUAL WITH THE DEFINITIONS INDICATED HEREIN, SEPARATE AND ITEMIZED DESIGNATION OF THE RESULTS WHICH MAY BE GENERATED AS A RESULT OF VARYING CLIMATIC CONDITIONS AND PERSONAL MANNER OF USE OF THE YACHT ARE REQUIRED. THE MATTERS CITED HEREIN CONTAIN ESTIMATES ONLY AND UNDER NO CIRCUMSTANCES SHALL BE DEEMED TO DESIGNATE THE GENERALLY APPLICABLE RESULTS.

ALBEIT THE FACT THAT INFORMATION CONTAINED HEREIN REFLECT THE RESULTS OF VARIOUS TESTS AND OPERATING RESULTS IT SHALL BY NO MEANS TO BE CONSTRUED AS A GUARANTEE OR WARRANTY FOR ALL TYPES OF USE AND OPERATION. INFORMATION AND/OR ACCESSORIES RELATING TO PARTICULAR CLIMATIC CONDITIONS AND PERSONAL MANNER OF USE MAY VARY IN CERTAIN STATES AND THEY MAY BE OBTAINED THROUGH DIFFERENT SPECIFICATIONS. IF YOU REQUIRE FULL AND COMPLETE INFORMATION ON ANY YACHT MODEL SHOWN HEREIN, PLEASE CALL OUR NEAREST BRANCH OFFICE.

PERI YACHTS MAIN OFFICE

BAGDAT CADDESİ ONCU SOKAK
BUYUKHANLI KONUTLARI B2/10
SUADIYE 34740 ISTANBUL TURKEY
T +90 (216) 464 7030
F +90 (216) 464 7020
WWW.PERIYACHTS.COM

PERI YACHTS SHIPYARD

ANTALYA SERBEST BOLGESİ
(FREE TRADE ZONE) F ADA
07070 ANTALYA TURKEY
T +90 (242) 259 3653
F +90 (242) 259 3654

PERI YACHTS FRANCE

14 AVENUE FREDERIC MISTRAL
06600 ANTIBES
P +33 (0) 493 340 340
F +33 (0) 493 340 923
WWW.PERIYACHTSFRANCE.COM